

Welcome to  
Year 1!



Meet the Teacher

Wednesday 17<sup>th</sup> September 2025  
3.45 – 4.15 pm



We are the  
Fantastic Foxes!

# Teachers and staff

- 🍏 Mrs Maynard – Year 1 class teacher
- 🍏 Miss Twigg – PPA cover on a Tuesday afternoon
- 🍏 Mrs Twigg - teaching assistants
- 🍏 Mr Forbes on a Tuesday afternoon for PE from RS Coaching.

# School Rules

'Where Pupils Succeed'

🍏 Be Ready

🍏 Be Safe

🍏 Be Respectful

We also have our REACH values:

R  
espect

E  
mpathy

A  
spirational

C  
ollaboration

H  
onesty

# Communication

- ☎ Parent Hub
- ☎ School Website – weekly update on our class page
- ☎ Email:

[parentmail@willington.derbyshire.sch.uk](mailto:parentmail@willington.derbyshire.sch.uk)

[foxes@willington.derbyshire.sch.uk](mailto:foxes@willington.derbyshire.sch.uk)

# What your child needs

- 👜 Reading and/or library book and reading diary
- 👜 Water bottle containing water
- 👜 A suitable coat, as we will be outside in all weathers
- 👜 Wellies for OPAL time at lunchtime

# School Uniform

## Our general uniform consists of:

- Royal Blue sweatshirt or cardigan (logoed)
- Dark grey trousers/skirt/pinafore/shorts
- White polo t-shirt (plain or logoed)
- Blue checked dress
- White/Grey/black socks or tights
- Black flat sensible safe shoes – no trainers and no heels
- School Book Bag (EYFS and Key Stage 1)
- School bag – sensible size for the children to carry water, reading book, school library book, reading record.
- A cap or sensible summer hat may be worn in the summer months on the playground.

## **Symbols of faith**

Certain items of headwear, such as the turban or headscarf and certain items of jewellery, such as the Kara bangle, may be worn by pupils when doing so is genuinely based on manifesting religious or racial beliefs or identity.

## **Valuables**

The school cannot take responsibility for damage, loss or theft of any of these items. All personal items including uniform should be clearly labelled.

## **Jewellery**

If a pupil has pierced ears, plain studs should only be worn in order to comply with health and safety regulations and must be taped over on PE days. Watches may be worn to school – except on PE days.

## **Hair**

If long enough (shoulder length), hair must be tied back every day. Hair dye/colouring is not permitted unless on a dress up day such as World Book Day dress up. Hair should not have shaved lines and styles cut into the hair. Hair accessories should be kept to a minimum.

## **Pupils are not permitted to wear:**

- Jewellery except for one small stud earring in each pierced ear
- Over sized hair accessories
- Make-up
- False eyelashes
- False nails/Nail Varnish
- Caps, jeans
- Oversized head bands – including 'cat ears' and large bows.

# PE

## ⊗ PE kit:

- ⊗ All children at WPS continue to come into school in suitable PE kit on their PE days (Tuesday and Thursday for us this half term).

### **PE Kit**

- Royal Blue Sweatshirt (School Logo or Plain) or Royal Blue Hoodie (School Logo or Plain)
- Plain black joggers/leggings/shorts – no branded items
- White t-shirt
- Suitable sports trainers
- Swimming costume/trunks, towel for those pupils attending swimming lessons.

# Topics

- We have different topics in Year One as compared to EYFS, as follow the KS1 Curriculum.

## 2025-26 Yearly Overview – Year One



| Year 1                 | Autumn 1  | Autumn 2   | Spring 1  | Spring 2  | Summer 1   | Summer 2  |
|------------------------|---|--|---|---|--|---|
| Science                | Seasonal Change<br><small>(revisited throughout the year as the seasons change)</small> | Animals, including humans  | Animals, including humans                                       | Everyday Materials  | Everyday Materials   | Plants  |
| Geography              | Continents and Oceans   |  | The United Kingdom  |   | Climate  | Australia   |
| History                |   | Great Fire of London   |   | The Plague  |  | Florence Nightingale  |
| Art                    | Portraits   |  | In the Jungle   |   | The Beauty of Flowers  |   |
| Design and Technology* |   | Slider mechanisms  |   | Frame structures  |  | Portable Snacks   |
| Physical Education     | Fundamentals<br>Team Building   | Ball Skills<br>Gymnastics  | Dance<br>Target Games   | Sending and Receiving<br>Net and Wall Games                     | Cricket<br>Invasion Games  | Athletics<br>Striking and Fielding  |
| PSHE                   | Being Healthy   | Difference and Diversity   | Exploring Emotions  | Relationships   | Being Responsible  | Bullying Matters  |
| Computing              | Introduction to Purple Mash<br><small>(also Digital Literacy)</small>                   | TBC  | TBC<br><small>(also Digital Literacy)</small>                   | TBC<br><small>(also Digital Literacy)</small>                   | TBC<br><small>(also Digital Literacy)</small>                                  | TBC<br><small>(also Digital Literacy)</small>   |
| Religious Education    | Who do Christians say made the world?<br><small>(Creation)</small>                      | Why does Christmas matter to Christians?<br><small>(Incarnation)</small> | Who is Jewish and how do they live?<br><small>(Judaism)</small> | What do Christians believe God is like?<br><small>(God)</small> | What does it mean to belong to a faith community?<br><small>(Thematic)</small> | How should we care for the world and for others, and why does it matter?<br><small>(Thematic)</small> |
| Music                  | Hey You!  | Rhythm in the way we walk & the Banana Rap                               | In the Groove   | Round and Round   | Your Imagination   | Reflect, Rewind and Replay  |

# Reading

- Reading will consist of 3 group reading sessions with a teacher, focusing on decoding the book, reading with prosody and comprehension skills.
- Each day we will have a whole class story time, when we share stories together and discuss what we enjoy about them, as well as the vocabulary.
- Children have access to the reading area
- Please record any reading you do with your child in their reading diary.

# Statutory Assessments

- In June, all children in Year 1 sit the Phonics Screening Check.
- It is designed to confirm whether children have learnt sufficient phonic decoding and blending skills to an appropriate standard.
- Reported to parents in July as part of their Year 1 End of Year School report.
- Children who do not pass gain extra support and retake in Year 2.
- Reading at home regularly will have a massive impact on your child's confidence at tackling this assessment.

# Statutory Assessments

## Practice sheet: Real Words

beg

twinkl.co.uk

at

twinkl.co.uk

sum

twinkl.co.uk

in

twinkl.co.uk


## Practice sheet: Pseudo Words

vap 


twinkl.co.uk

osk 

twinkl.co.uk

ot 

twinkl.co.uk

ect 

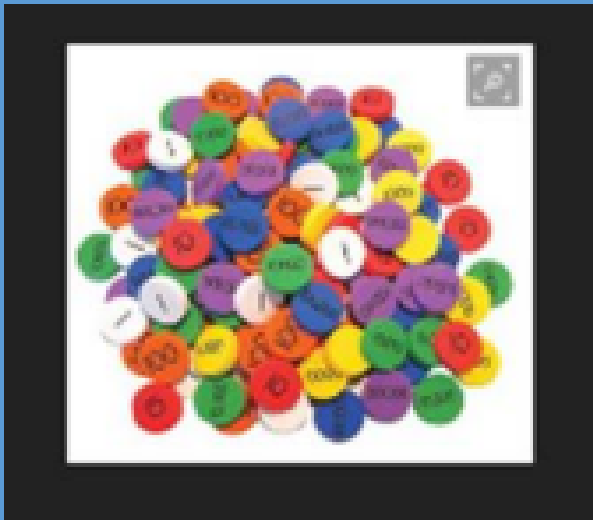
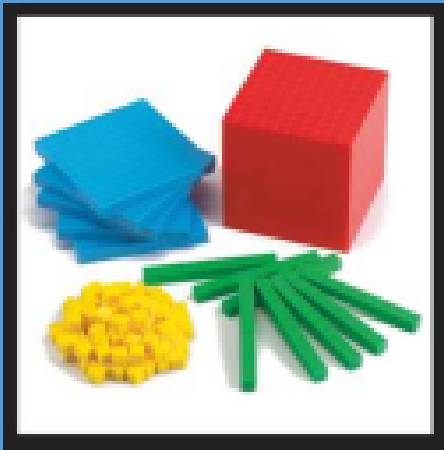
twinkl.co.uk

# Learning

## 🍏 Maths – White Rose

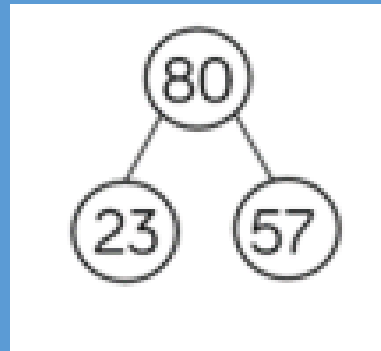
- 🍏 Focus is on mathematical fluency in all areas and applying this knowledge to reason and solve problems.
  - 🍏 Need to build resilience and ability to persevere e.g. take risks, make mistakes and checking skills.
  - 🍏 Need to develop ability to explain their thinking and articulate methods.
  - 🍏 Need a solid ‘bank’ of number facts (such as number bonds to 10) that that can recall with SPEED and ACCURACY.

# 1. Concrete apparatus



# 2. Picture representations

| H | T | O |
|---|---|---|
|   |   |   |



| H | T | O |
|---|---|---|
|   |   |   |
|   |   |   |

\_\_\_ + \_\_\_ = \_\_\_

# 3. Abstract

| Column Addition<br><i>(no exchange)</i> |                 |   |   | Column Subtraction<br><i>(no exchange)</i> |             |                      |   |   |               |   |
|---|-----------------|---|---|--|-------------|----------------------|---|---|---------------|---|
| Check<br>up                             | H               | T | O | Start<br>here                              | Check<br>up | H                    | T | O | Start<br>here |   |
| answer                                  | 3               | 5 | 1 | ↓  | answer      | 7                    | 6 | 3 | ↓             |   |
| ↑                                       | +               | 6 | 3 | ↓  | ↑           | -                    | 3 | 4 | 1             | ↓ |
| ↑                                       | 9               | 8 | 5 | ↓  | ↑           | 4                    | 2 | 2 | ↓             |   |
| ↑                                       | Add the<br>tens |   |   | ↓  | ↑           | Subtract the<br>tens |   |   | ↓             |   |

Autumn term

Number

**Place value**

(within 10)  
FREE TRIAL

VIEW

Number

**Addition and subtraction**

(within 10)

VIEW

Geometry  
Shape

VIEW

Consolidation

Spring term

Number

**Place value**

(within 20)

VIEW

Number

**Addition and subtraction**

(within 20)

VIEW

Number

**Place value**

(within 50)

VIEW

Measurement

**Length and height**

VIEW

Measurement

**Mass and volume**

VIEW

Summer term

Number

**Multiplication and division**

VIEW

Number

**Fractions**

VIEW

Geometry  
Position and direction

VIEW

Number

**Place value**

(within 100)

VIEW

Measurement  
Money

VIEW

Measurement

**Time**

VIEW

Consolidation

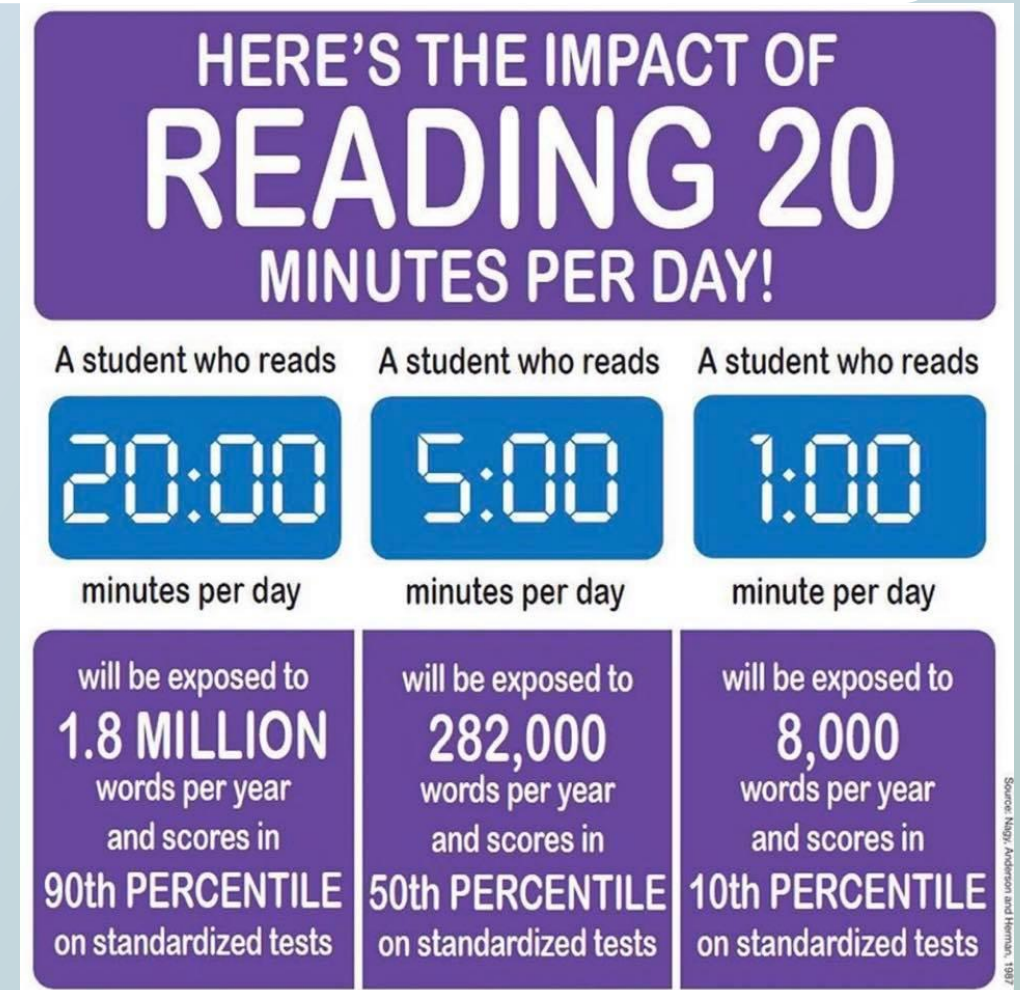
# Learning

## 🍏 Writing

- 🍏 We follow a three-week cycle with a specific sequence.
- 🍏 There will be two units each half term.
- 🍏 We will practice skills together that will support the children with their independent writing at the end of the unit.

# Homework

- 🍏 Reading - Aim to read each night, if possible. Please sign reading diaries.
- 🍏 This only needs to be for 10 minute blocks.



# Homework

- 🍏 Times Tables – NumBots
- 🍏 Reading – reading book and also Phonics sheet
- 🍏 Learning Logs- Homework menu coming home each half-term

# Friends of Wellington iPad Fundraising

- Recently purchased 30 iPads and cabinet
- Currently fundraising for another 30 iPads and cabinet
- £4000 fundraising target



Year 3 child

I would like to have more iPads in school as we will be able to use them more often.

Having an iPad each in class makes working in lessons so much more fun!

Year 6 child

It is so much easier to have an iPad each in class as we get more learning time on them!

Year 3 child

# 2025 School Fun Run

- **Friday 26<sup>th</sup> September** – Parents arrive 1:45pm
- KS1 children run start: 2:00pm – 2:20pm
- Year 3 and 4 children run: 2:20pm – 2:40pm
- Year 5 and 6 children run: 2:40pm – 3:00pm



- Raising money for a second class set of iPads
- **£4000 fundraising target (including gift aid donations)**
- Refreshments available to purchase

Scan the QR code to sponsor your child to carry out the fun run and help the Friends of Willington School to raise funds for 30 more iPads.

# School Lottery

- A weekly £1 per ticket lottery where there is a **guaranteed winner from our school every week.**



- 40p from every ticket goes back to school fundraising.
- **A chance to win 30% of ticket prizes (approximately £15 per week)**
- Also a chance to win the national school lottery prize of £25,000 or other weekly prizes (if you correctly pick the 6 numbers)

# Any Questions?

