

Welcome to Year 4



Meet the Teacher

Wednesday 17th September
2025



Year 4



Miss Shepherd
Class Teacher



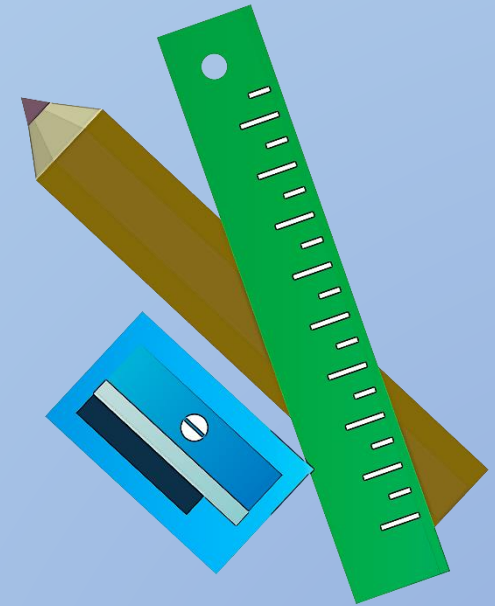
Mrs Greenwell
Teaching
Assistant



Miss Twigg
Teaching
Assistant – PPA
cover

What your child needs

- Reading book/s and diary
- Spelling book
- Water bottle containing water
- A suitable coat
- Wellies – OPAL
- Long hair tied back – this is part of our school uniform policy



Class Page

<https://www.willington.derbyshire.sch.uk/>

Willington Primary School
Where Pupils Succeed!

Home About Us Parents/Carers Pupils Curriculum Safeguarding Key Information

The Den Term Dates Friends of WPS

Aspiration

o seeing all of the children in school on Monday!

Q Search Translate

Cookie Policy This site uses cookies to store information on your computer. Click here for more information Allow Cookie Settings

Overview

Each half term, you can find our Curriculum Overviews on the class page.

Willington Primary School

Year 4 Curriculum – Autumn 1

Where Pupils Succeed

The Brilliant Badgers

Story Time Spine
THE MANY WORLDS OF ALFIE BRIGHT
Protected Characteristics:
Age

Our Class Text
THE IRON MAN by Ted Hughes

Writing (2 pieces)
Purpose: Writing to inform
A set of instructions to put the Iron Man back together
Purpose: Writing to persuade
Persuasive letter to the Iron Man

Spelling
Homophones, challenge words and words with the prefixes
in-, il-, im-, ir-, sub-, inter-

Maths
Place Value
Addition and Subtraction

Science
Topic: States of Matter

Maths
Daily fluency (Fluent in 5) and revisiting of topics (Flashback 4)

Geography
Topic: Describing Maps of the World

Art
Skill: Painting & collage
Topic: Portraits

Computing
Digital Literacy – Self Image & Identity

History
Topic: Changes in Britain (Stone Age to Iron Age)

Our School Values:
At Willington, we 'REACH' to be the best that we can be! We show:
Respect Empathy Aspiration Collaboration Diversity

RE
What kind of world did Jesus want?
(Gospel)

PE
Fundamentals & Athletics

Music
Topic: Mamma Mia

PSHE
Topic: Being Me

French
Topic: Presenting myself

Things you can do at home:
Spelling Shed

Willington Primary School

Timetable

	8:50-9:00	9:00-9:30	9:30-10:30	10:30-10:45	10:45-11:00	11:00-12:00	12:00-1:00	1:00-3:30				
Monday	Registration & Morning task <i>Listen to readers</i>		Maths	Class story	BREAK	English	LUNCH	PE 1:10-1:55		Shared Reading	Science	
Tuesday			Maths	Class story		English		PSHE	Daily Mile (10 mins)	History / Geography	Shared Reading	
Wednesday			PE	Class story		English		Maths	Art / DT			
Thursday			Class E-Safety	Maths		Class story		English	Library	RE (1:10-2)	Daily Mile (10mins)	French / Music
Friday			Celebration Assembly	Maths		Class story		English	Spelling Test	Shared Reading	Daily Mile (10mins)	Computing

PE

⊗ Monday and Wednesday

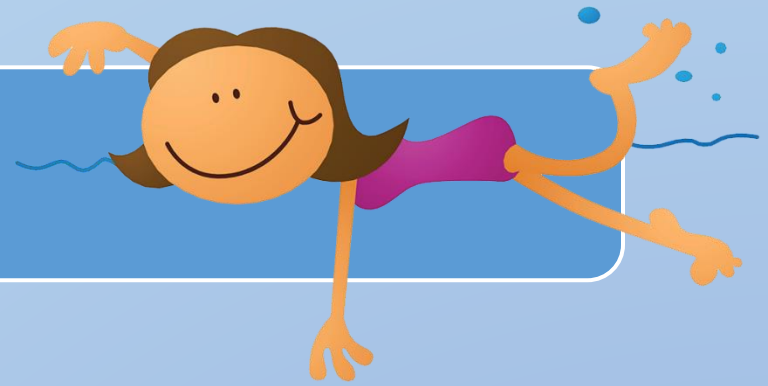
Children are to come into school wearing PE kit on PE days.

PE Kit

- Royal Blue Sweatshirt (School Logo or Plain) or Royal Blue Hoodie (School Logo or Plain)
- Plain black joggers/leggings/shorts – no branded items
- White t-shirt
- Suitable sports trainers
- Swimming costume/trunks, towel for those pupils attending swimming lessons.

Swimming will begin in the Spring and Summer term...

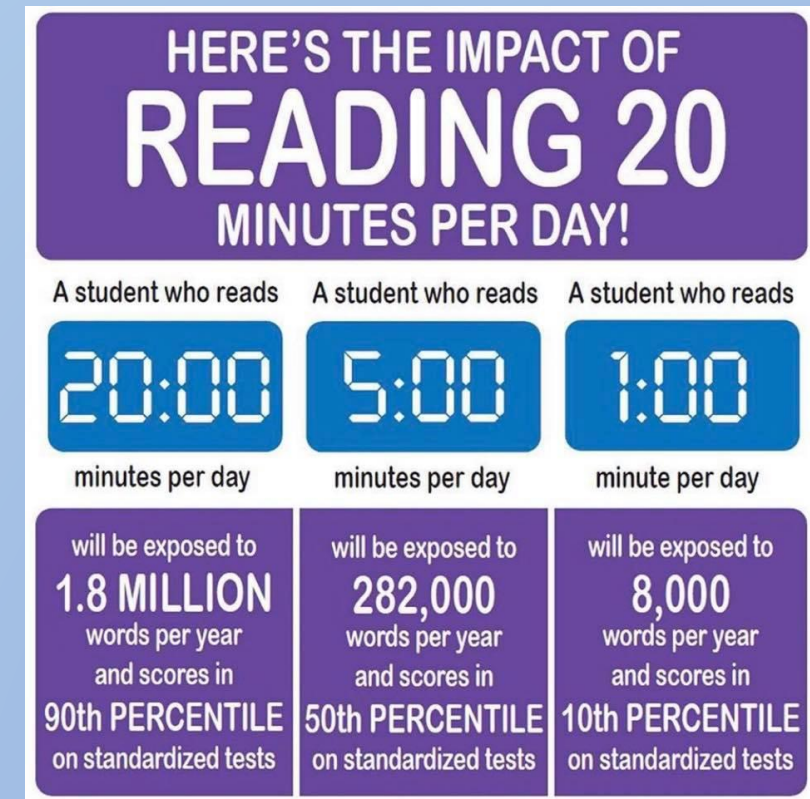
Swimming



- Start date – January 12th 2026
- Children will go into lunch at 12.00 so their food has settled in time!
- Children to come into school in PE kit (no swim wear under uniform)
- Swimming bags must be named and contain a towel, swimming costume / shorts and swimming hat. Goggles advised.
- Swimwear to be dark (plain black or navy)
- One piece swimming costumes.

Homework

- 🍏 Learning logs – half-termly homework (project-based tasks)
- 🍏 Weekly spellings – children to practise in spelling books and on SpellingShed (at least 3 times per week)
- 🍏 Reading – a minimum of 3 times per week (5 would be great!)
- 🍏 Times Tables – children to practise their times tables on TTRockstars at least 3 times per week....



Statutory Assessment

- Multiplication Tables Check - June 2026
 - The purpose of the MTC is to determine whether pupils can recall their times tables (up to and including 12×12) fluently, which is essential for future success in mathematics.
 - Please encourage your child to practise their times tables for at least 3 times a week at home. (TT Rockstars, songs and games etc)
- We will also carry out in-school assessments each half term to support our teacher assessments.



School Rules

- Good behaviour is rewarded through:
 - ✓ House Points
 - ✓ CARROT_s
 - ✓ Celebration certificates and privileges

Courtesy
And
Respect
Rewards
Orange
Tokens



'Where Pupils Succeed'

Our School Rules:

1

Be Ready

2

Be Respectful

3

Be Safe

Our School Values:

At Willington, we 'REACH' to be the best that we can be! We show:

Respect

Empathy

Aspiration

Collaboration

Honesty

Y4 Camp Willington!



We have booked again for next year!

Thursday 30th April/Friday 1st May.

More information to follow in the new year.



Friends of Wellington iPad Fundraising

- Recently purchased 30 iPads and cabinet
- Currently fundraising for another 30 iPads and cabinet
- £4000 fundraising target



Year 3 child

I would like to have more iPads in school as we will be able to use them more often.

Having an iPad each in class makes working in lessons so much more fun!

Year 6 child

It is so much easier to have an iPad each in class as we get more learning time on them!

Year 3 child

2025 School Fun Run

- **Friday 26th September** – Parents arrive 1:45pm
- KS1 children run start: 2:00pm – 2:20pm
- Year 3 and 4 children run: 2:20pm – 2:40pm
- Year 5 and 6 children run: 2:40pm – 3:00pm



- Raising money for a second class set of iPads
- **£4000 fundraising target (including gift aid donations)**
- Refreshments available to purchase

Scan the QR code to sponsor your child to carry out the fun run and help the Friends of Willington School to raise funds for 30 more iPads.

School Lottery

- A weekly £1 per ticket lottery where there is a **guaranteed winner from our school every week.**



- 40p from every ticket goes back to school fundraising.
- **A chance to win 30% of ticket prizes (approximately £15 per week)**
- Also a chance to win the national school lottery prize of £25,000 or other weekly prizes (if you correctly pick the 6 numbers)

Any Questions?

